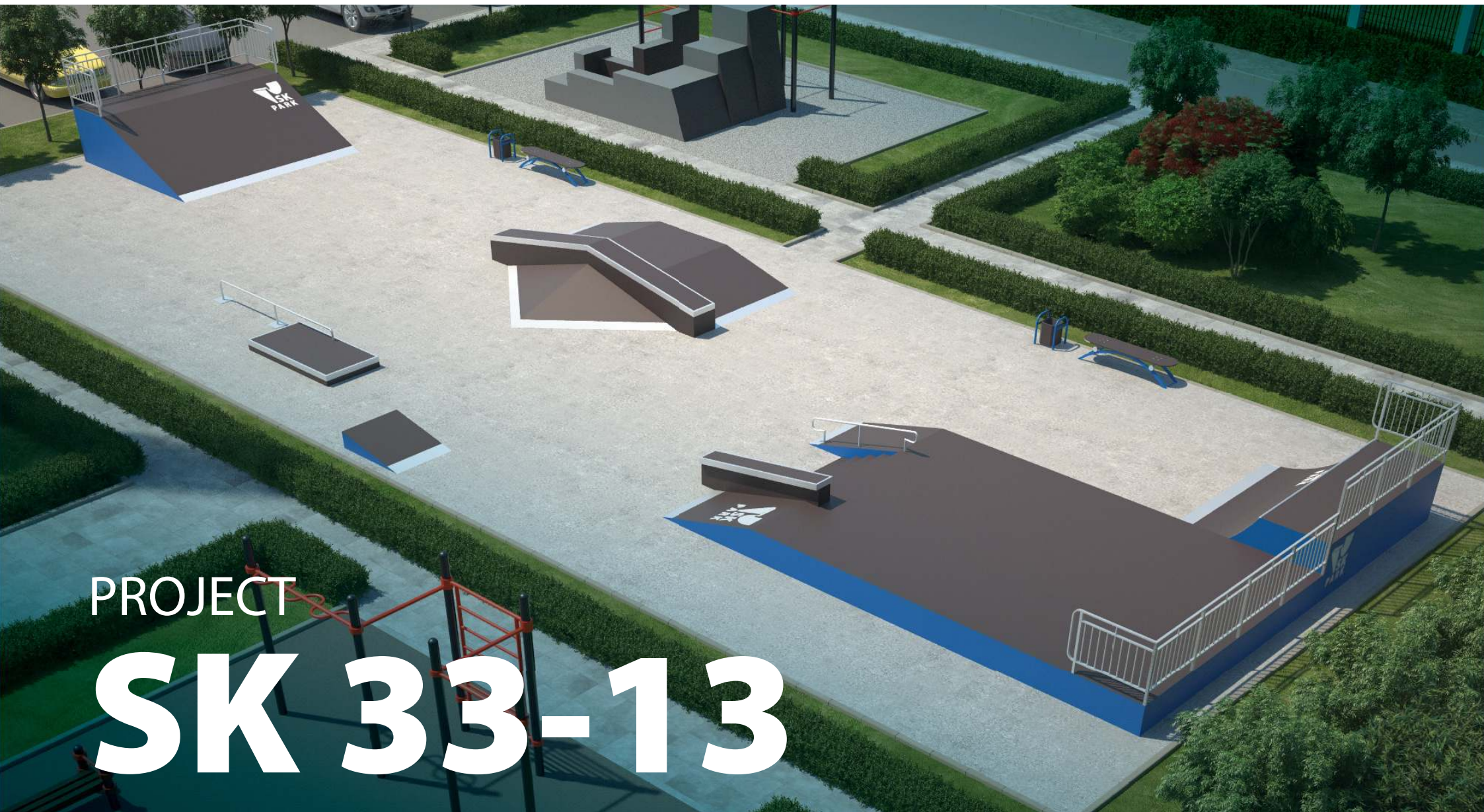




skatepark
design
and construction



YOUTH'S DREAMS COME TRUE



PROJECT

SK 33-13

PROJECT SK 33-13



LxWxH, mm

① **BANK**
4080x4880x1220

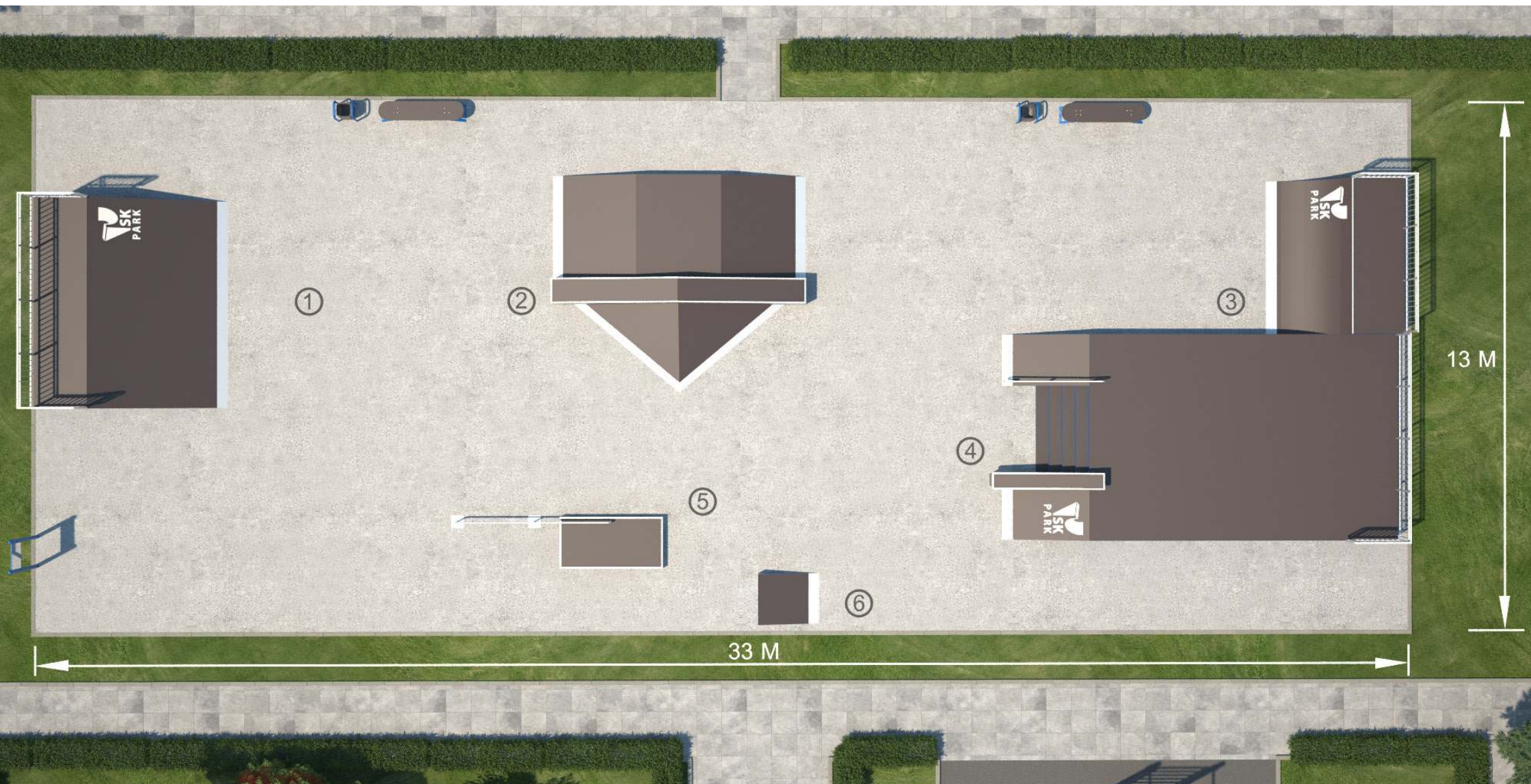
② **FUNBOX WITH TRANSFER**
6000x5140x500/1020

③ **QUARTERPIPE**
3000x3660x1000

④ **SKATEPLAZA**
9620x4880x500/900

⑤ **MANUAL PAD**
5030x1220x200/420

⑥ **KICKER**
1450x1220x300



PROJECT SK 33-13

About project:

Project is directed for skateboarding for riders with beginner and medium level. The main elements of project is Funbox(Nº2) - which allow riders make jumps, slides and transfer tricks and Skateplaza (Nº4) which imitating city obstacles. Project provide line elements for learning jumps and sliding basic tricks. Also equipment can be used by rollerbladers and kickscooters.

Requirements for area: asphalt/concrete

Primary users:

skateboarding, rollerblading, kickscooter

Level: beginners/medium

The average numbers of riders: 15 people

Minimum area size: 33x13 (429 m²)

Warranty – 2 years.

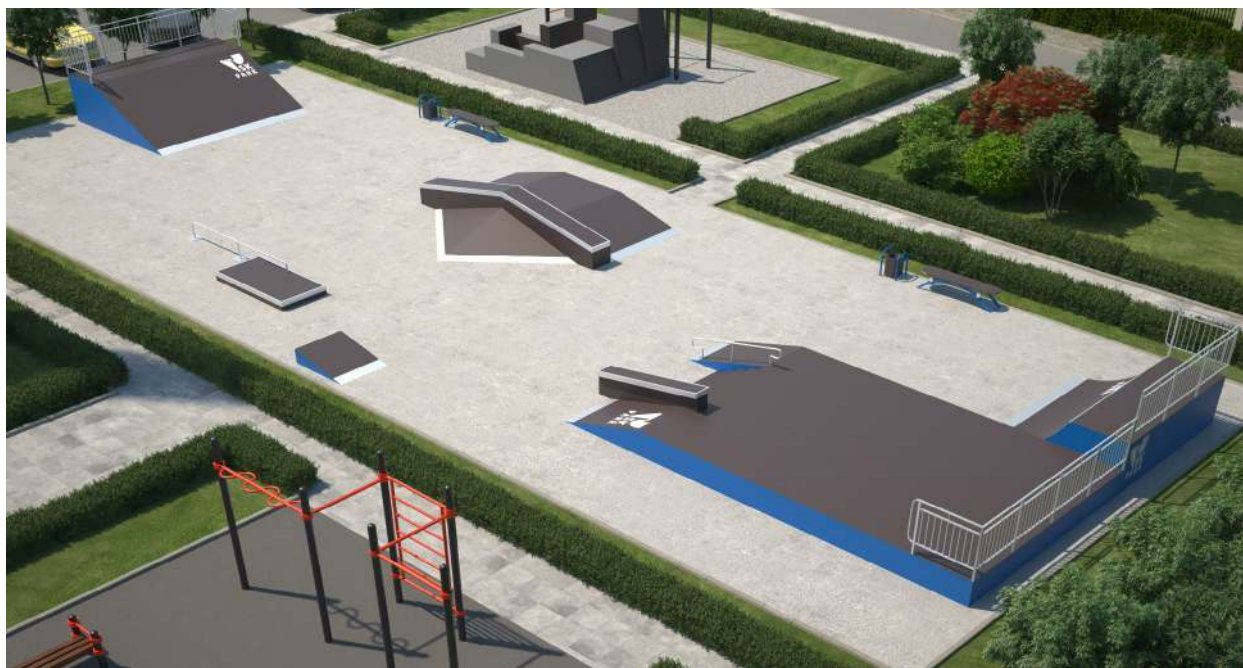
Equipment complies GOST 54415-2011(Russian standard).

Equipment complies DIN EN 14974(European standard).

More options:

- drawing a logo on the equipment
- colouring of a framework and side panels in any color by RAL

Price and terms you can specify with managers of SKpark company.





MATERIALS

material comparisons



METAL FRAME

mobile version of equipment

PLEASE SPECIFY PRICE
AND TERMS WITH MANAGERS
OF SKPARK COMPANY

- **Frame**

Steel module frame

- **Anti-corrosion**

Polymeric-powder coating
any color according by RAL

- **Surface**

Finnish laminated plywood
Thickness – from 12mm

- **Side panels (additional option)**

Finnish laminated plywood
Thickness – from 12mm
any color according by RAL

- **Fasteners** (rivets, screws)

Steel galvanized fasteners

ALL USED MATERIALS ARE CERTIFIED AND
HAVE CERTIFICATE OF CONFORMITY



MATERIALS

material comparisons



WOODEN FRAME

stationary version of equipment*

PLEASE SPECIFY PRICE
AND TERMS WITH MANAGERS
OF SKPARK COMPANY

- **Frame****

Smoothed and planed
Finnish laminated plywood

- **Surface**

Finnish laminated plywood
Thickness – from 12mm

- **Side panels**

Finnish laminated plywood
Thickness – from 12mm

- **Safety hand-rails**

Steel profile

- **Fasteners** (rivets, screws)

Steel galvanized fasteners

* Required installation specialists

** Processing by antiseptic and fire prevention solute.

ALL USED MATERIALS ARE CERTIFIED AND
HAVE CERTIFICATE OF CONFORMITY





WOOD VS METALL



**WOODEN
FRAME**



**STEEL
FRAME**



DURABILITY

ABOUT 7 YEARS

ABOUT 15 YEARS



WARRANTY

2 YEARS

2 YEARS



NOISE LEVEL

Can be used
at inhabited yard

It isn't recommended
to use near houses.



**AVERAGE
INSTALLATION TIME**

Required installation
specialists. Average installation
time: 3-30 days.

Possibility of installation
by yourself, according to the circuit
assembly. Average installation
time: 1-7 days.



DISMANTLING

Fixed construction
(practically unsuitable
for dismantling).

Possible to disassemble
and assemble the equipment
if it necessary.



skatepark
design
and construction

119571, Moscow,
Leninsky prospect,
158, office 338

tel.:

+7 (495) 988-27-38

+7 (985) 820-62-25

MAIL@SKPARK.RU
WWW.SKPARK.RU

